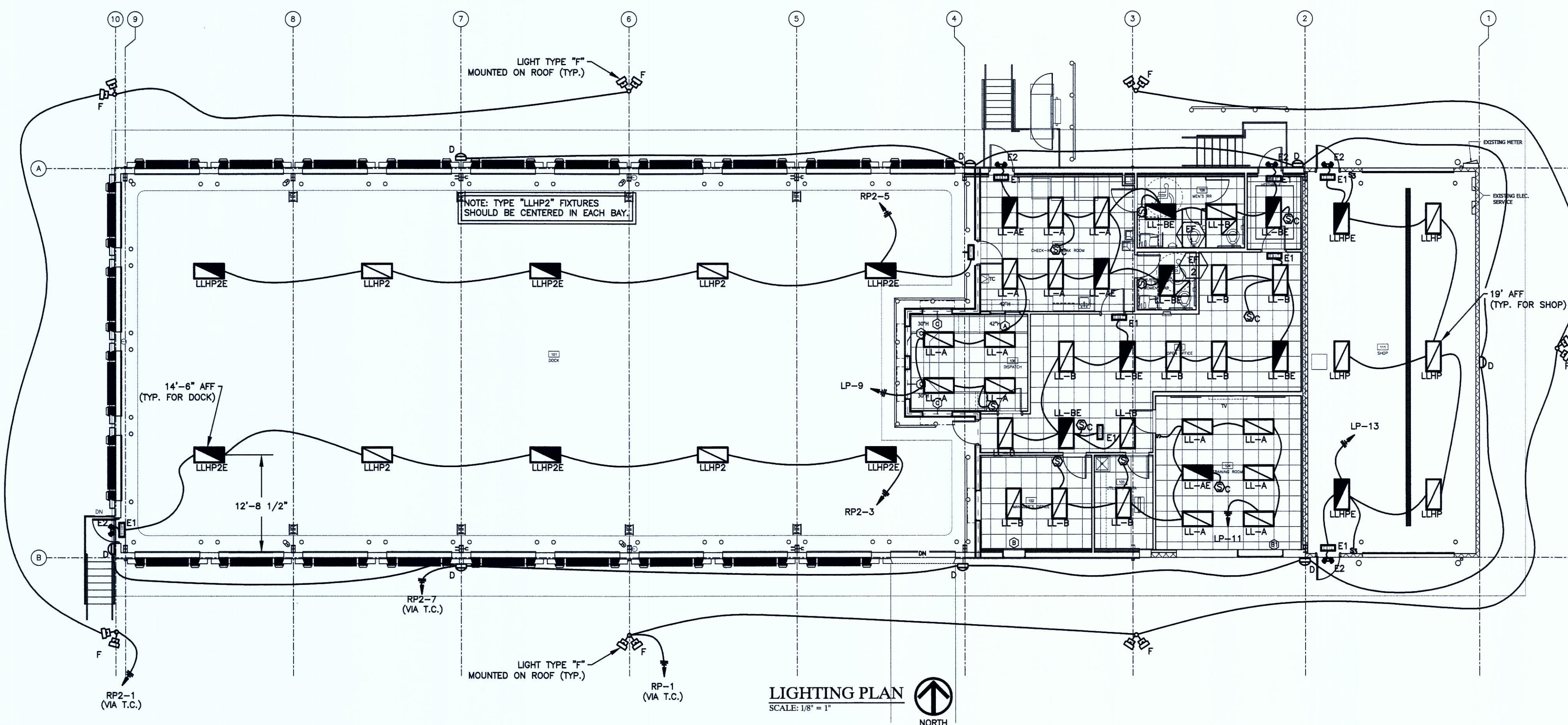


POWER PLAN NOTES:

- ▽ RECEPTACLE AND DATA DROP MOUNTED ON PLYWOOD (BY ELECTRICAL SUB) IN CEILING JOIST SPACE. INSTALL CAT5 DATA CABLE FROM THIS LOCATION TO DATA ROOM IN OFFICE. TERMINATION OF CABLE WILL BE BY OTHERS. VERIFY EXACT LOCATIONS WITH OWNER PRIOR TO ROUGH-IN.
- ▽ ELECTRICAL CONTRACTOR TO PROVIDE A 6"X 6" BOX WITH 2" CONDUIT FOR SECURITY. COORDINATE LOCATION WITH OWNER PRIOR TO ROUGH-IN.
- ▽ NO CONDUIT SHALL BE RUN UNDER CONCRETE SLAB.
- ▽ ALL CONDUIT TO BE RUN IN WALL/CEILING IN WAREHOUSE.
- ▽ ALL DEVICES IN DISPATCH TO BE MOUNTED 8" BELOW COUNTER TOP. RECEPTACLES SHALL BE TURNED HORIZONTAL. COORDINATE WITH ARCHITECTURAL ELEVATIONS PRIOR TO ROUGH-IN.
- ▽ GCFI RECEPTACLE 24" AFF FOR BRADLEY ADVOCATE LAVATORY SYSTEM COORDINATE AND VERIFY EXACT LOCATION WITH MANUFACTURER'S REQUIREMENT.
- ▽ INSTALL CONDUIT WITH EXTERIOR WEATHERHEAD DOWN TO PLYWOOD IN CEILING JOIST SPACE FOR ACCESS ANTENNA PER DETAIL ON SHEET E3.1. FROM THE PLYWOOD AT EACH LOCATION, INSTALL A CAT5 DATA CABLE TO THE DATA ROOM IN THE OFFICE. TERMINATION OF THE CABLE WILL BE BY OTHERS. VERIFY EXACT LOCATION WITH OWNER PRIOR TO ROUGH-IN.
- ▽ FOR TIMELOCK, INSTALL A 10"X10"X4" ENCLOSURE MOUNTED WITH THE CENTERLINE 48" AFF. THE ENCLOSURE SHALL HAVE A HINGED COVER AND SHALL HAVE A KEYLOCK (HUBBELL WIEGMANN N1C101004 WITH WAL128). THE ENCLOSURE SHALL BE RECESSED IN THE WALL AND SHALL HAVE A RECEPTACLE AND DATA DROP MOUNTED INSIDE. PROVIDE A GROMMETTED HOLE THROUGH THE COVER FOR ROUTING POWER AND DATA LINE. SEE ARCHITECTURAL ELEVATIONS AND DETAILS.
- 9. THE CIRCUITING SHOWN IN THIS DESIGN PACKAGE IS BASED UPON THE BEST AVAILABLE INFORMATION TO THE DESIGNER. THE INTENT IS TO RE-USE CIRCUITS MADE AVAILABLE BY THIS RENOVATION AS WELL AS THE NEW CIRCUITS PROVIDED BY NEW PANEL "RP".
- ▽ AIRPHONE ACCESS CONTROL COMMUNICATION STATION. COORDINATE LOCATION. FOR AIRPHONE: PROVIDE ROUGH-IN AT LOCATIONS SHOWN AND STUB CONDUIT OUT OF BUILDING. CONDUIT TO BE EXTENDED TO GATE OPERATOR IN FUTURE.
- ▽ FIELD COORDINATE EXACT LOCATION OF RECEPTACLE FOR TV WITH OWNER/ARCHITECT PRIOR TO INSTALLATION. MOUNT RECEPTACLE 84" AFF WITH CABLE TV OUTLET ADJACENT TO IT.
- ▽ INSTALL 12"X12"X8" JUNCTION BOX (WITH SCREW COVER) JUST ABOVE THE CEILING. INSTALL (2) 3" CONDUITS OUT OF THE TOP OF THIS BOX AND THROUGH THE WALL INTO THE DOCK CEILING AREA. KEEP CONDUIT AS HIGH AS POSSIBLE. MAINTAIN RATING OF FIRE WALL WITH PENETRATION.
- ▽ PROVIDE AND INSTALL 36" PLUGMOLD (WITH A MINIMUM OF 6 OUTLETS) AT OWNERS DATA RACK. PLUGMOLD TO BE FED FROM MP-1. COORDINATE RACK LOCATION PRIOR TO ROUGH-IN.

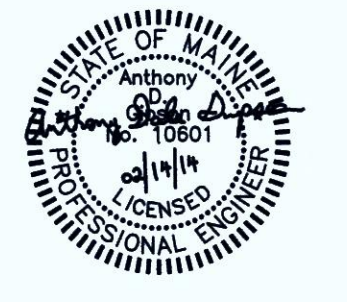
- = Knox box
- ⊠ = Fire Panel
- ⊡ = Pull Station
- ⊞ = horn/strobe (c = ceiling mount)
- ▷ = strobe
- = Smoke Detector



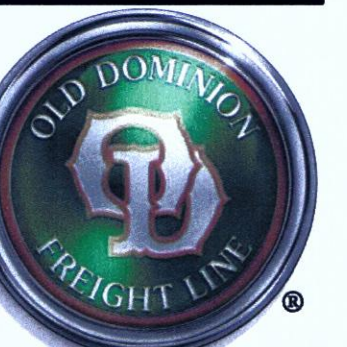
- LIGHTING PLAN NOTES:**
1. ALL EXIT SIGNS AND EMERGENCY LIGHTING UNITS ARE WIRED AHEAD OF ANY SWITCHING AND CONTROLS.
 2. SEE DETAIL ON SHEET E3.1 FOR MOUNTING DETAIL FOR TYPE "F" FLOODLIGHTS.
 3. CIRCUITS SHOWN AS "VA TC". SHALL BE CONTROLLED BY AN ASTRONOMICAL TIMELOCK.



Oliver-Rhoads & Associates, Inc.
301 Industrial Boulevard
Tullahoma TN 37388
Office: 931.454.9949
Fax: 931.454.2338
www.oliver-rhoads.com



Contractor:
DF Chase, Inc.
3001 Armory Drive
Suite 225
Nashville, TN 37204



Existing Terminal Renovation for:
OLD DOMINION FREIGHT LINE
ODFL PORTLAND, ME
185 RAND ROAD,
PORTLAND, ME 04102

FOR PERMIT 2/14/14

Project No. 13061.00

The Architect hereby reserves its common law copyright and other property rights in these plans, ideas and design which shall be reproduced, changed or copied in any form or manner whatsoever, nor are they to be assigned to any third party without first obtaining the express written permission from the Architect. The drawing is not final or to be used for construction until signed by the Architect.

Sheet Name:
POWER & LIGHTING PLAN

Sheet Number:

E.1.1